

WELDING AND PLATE ROLLING

Fitting genius

WWW.CIPRIND.COM

QUALITY CONTROL MANAGEMENT, A TURNKEY MANUFACTURING SOLUTION: THE STRENGTH OF A TEAM IN THE MECHANICAL CONSTRUCTION INDUSTRY

From consulting to assembling,

Team Tecnocarp provides customers with a whole set of competences and experience to supply the **finished product**.



**35.000
mq**

THE TEAM'S
COMBINED
PRODUCTIVE AREA

**6.000
ton**

TONS OF METAL
PROCESSED IN A
YEAR ON AVERAGE

2.500

THE ORDERS
PROCESSED BY THE
TEAM IN A YEAR

**21
mil**

THE TEAM'S
COMBINED
TURNOVER



NIKVA
CONSULTING



CML
INNOVAZIONI
MECHANICAL
ENGINEERING
DESIGN



TECNOCARP
CARPENTERIA INDUSTRIALE
MEDIUM-HEAVY
METALWORK



ARES
LAVORAZIONI
MACCHINE
UTENSILI
BORING AND
MILLING



CIPRIND
WELDING AND
PLATE ROLLING



BAMU
MECHANICAL
CONSTRUCTIONS

TEAM TECNOCARP'S CERTIFICATIONS:

UNI EN ISO 9001 | UNI EN ISO 3834-2 | UNI EN 15085-2
UNI EN 1090-2 | UNI EN ISO 14001

NIKVA

Driving companies to enhancement

Organizational and management consulting are the heart of our work: since 1996, established industrial companies as well as small manufacturing companies throughout Northern Italy have restructured their business organization with our help and obtained the certification of management systems in the areas of quality, environment, health and safety, welding. **GLOMO** is our division that offers calibration services for measuring instruments.

Podenzano (PC - Italy) | +39 0523 985 396
quality@nikva.it | www.nikva.it

ARES

Traditional heart, industrial production

ARES owns a machine fleet like few others in Italy, allowing the machining of very long pieces with the maximum precision. Soralue FR14, the biggest machine, has 2 opposite travelling columns which can work independently and a stolle working table of 3x16 m. to mill and bore pieces up to 14 x 4.2 x1.6 m3 and 32 ton.

Pontenure (PC - Italy) | +39 0523 517082
info@aresfresature.com | www.aresfresature.it

CML INNOVAZIONI

You need it, We fulfil it

CML Innovation cooperates with customers to design new solutions for automation and production, with a focus on safety norms. We offer thermal, structural and vibrational analysis thanks to our FEM systems. The new premises have specific tools and a 1000mq production area to assemble complete and complex systems.

Podenzano (PC - Italy) - +39 0523 902011/86
dmarangonecmlinnovazioni.it
www.cmlinnovazioni.com

CIPRIND

Fitting genius

Thanks to its specialised staff, CIPRIND supplies truncated-cone rolling, fitting completion, submerged arc welding, barred tees and NDT controls. The unique cold-plate rolling machine, especially designed for our use, can process plates up to 50 mm thickness and 1,550 mm width with a force of 350 ton.

Podenzano (PC - Italy) | +39 0523 523152
info@ciprind.com | www.ciprind.com

TECNOCARP

*The one and only reference for
your metalwork structures*

Medium-heavy steel metalwork and machining are the beating heart of our Team's activity, led by TECNOCARP. Thanks to its long-term experience, Tecnocarp can manage all phases of production, standing as the only point of reference for customers. Since 1973, thanks to great experience and innovation, Tecnocarp has been producing complex structures up to 30 ton.

Pontedell'Olio (PC - Italy) | +39 0523 875493
info@tecnocarp.it | www.tecnocarp-pc.com

BAMU

*Italian talent, German quality,
Slovakian production*

Design, medium-heavy metalwork, welding, thermal treatments, machining, assembling and delivery: Team Tecnocarp's whole service is available in Europe with BAMU. Thanks to the overhead cranes up to 40 tons and a milling and boring TOS centre with a working area of 5 x 3 x 2.2 m and a stolle turning table of 17.5 ton, Bamu can carry out the whole production in just one plant.

Valaská (Slovakia) | +421 48 3810752
bamu@bamu.sk | www.bamusteelworks.com

CIPRIND

Fitting genius

Since 2014, Ciprind soon began playing a leading role in the steel manufacturing industry.

Thanks to an extraordinary trained staff, CIPRIND offers truncated-cone rolling, fitting, submerged arc welding, barred tees and non-destructive tests.



AN EXCLUSIVE PRODUCTION

Ciprind invests in technology and machinery to give the best service: the plate rolling machine is really one of a kind, as it was especially designed for our use



SPECIALISED, WITH PASSION

People first: our extraordinarily trained staff is able to put skills and professionalism, but also great passion and tenacity at the company's service



YOUR ONE AND ONLY REFERENCE

Being part of Team Tecnocarp, Ciprind stands as the only point of reference for customers, granting a turn-key service.

The unique cold-plate rolling machine, especially designed for our use, can process plates up to 50 mm thickness and 1,550 mm width with a force of 350 ton.

"Seeing steel in the form of simple plates that become cones, perfectly round tubes, fittings or metalwork structures fills us with satisfaction and prompts us to set ourselves new goals."



**Ciprind is part of
TEAM TECNOCARP.**

Certified quality, finished product: the strength of a team in the field of mechanical constructions

REASONS TO CHOOSE CIPRIND

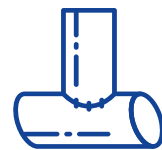
Ciprind means precision and a tailor-made product, for the finest metalwork structures



TECHNICAL
OFFICE



CYLINDRICAL
AND TRUNCATED-
CONE PLATE
ROLLING



PIPING AND
BARRED TEES



MEDIUM
LIGHTWEIGHT
METALWORK



SUBMERGED ARC
WELDING AND
TIG MIG-MAG
WELDING



THERMAL
TREATMENTS



NON
DESTRUCTIVE
TESTS



MACHINING



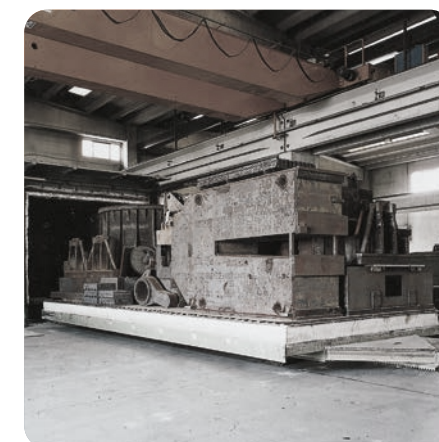
SURFACE
TRATMENTS



DELIVERY



TECHNICAL
ASSISTANCE



TYPES OF MACHINING / MECHANICAL PROCESSING

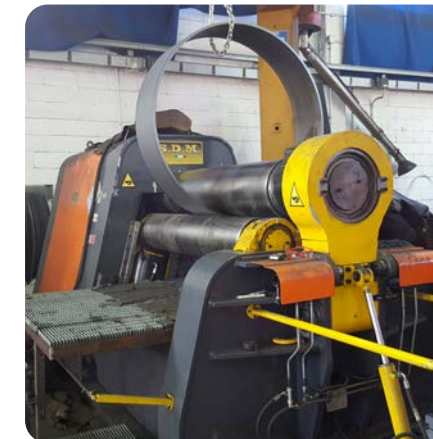
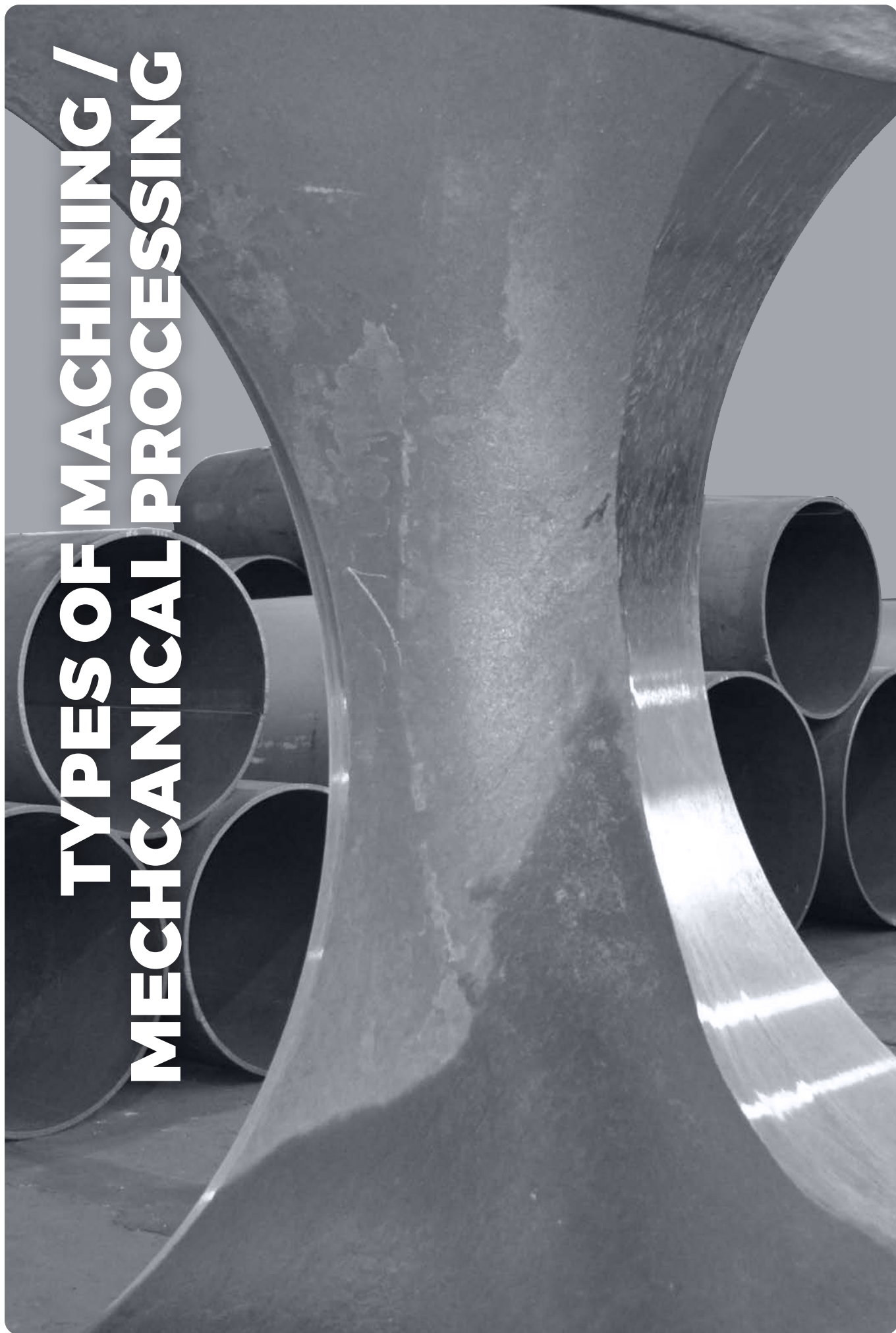


PLATE ROLLING



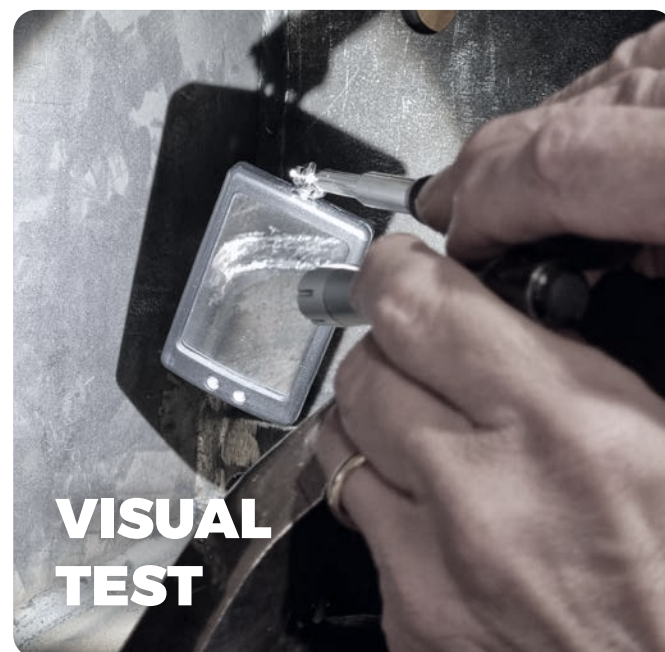
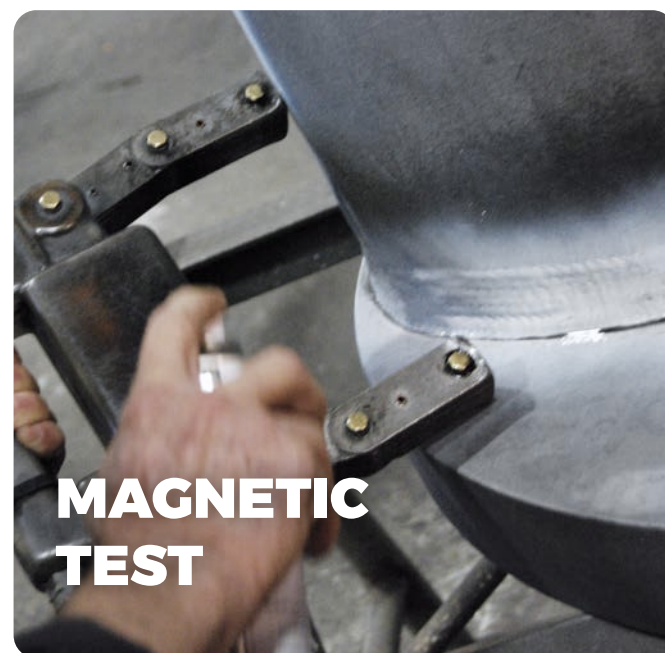
**SUBMERGED
ARC WELDING**

**TIG MIG-MAG
WELDING**
carried out
by qualified
operators



TESTING DEPARTMENT

Not only dimensional tests: in the testing department, Ciprind carries out upon request many NDT tests, i.g.: ultrasound, magnetic and penetrant testing. The testing staff have 2nd level certifications, according to: UNI EN ISO 9712 and ASNT-SNT-TC-1A.



PHOTOGALLERY OF PLATE ROLLED PIECES





A high-resolution image of an open notebook showing two blank, lined pages. The pages are white with light blue horizontal ruling. The notebook has a dark, textured cover visible around the edges. The spine of the notebook is in the center, dividing the two pages. The lighting is even, and the pages appear clean and unused.

This image shows a blank, double-page spread of a notebook. The notebook is open, revealing two facing pages. Both pages are white and feature horizontal ruling lines, with approximately 21 lines per page. The pages are slightly aged, showing a subtle yellowish tint. The notebook's dark, textured cover is visible around the perimeter of the pages. At the top of the cover, the word "NOTES" is printed in a bold, white, sans-serif font on both the left and right sides. In the bottom left corner of the left page, there is a small, circular logo. The logo contains a stylized infinity symbol or a similar geometric design in blue and red, with the word "CIPRIND" written in small, blue capital letters directly beneath it. A matching logo is also visible in the bottom right corner of the right page. The central gutter where the pages meet is clearly defined.



**CIPRIND is part of
TEAM TECNOCARP.**

Certified quality, finished product: the strength of a team in the
field of mechanical constructions

CIPRIND srl

via Galileo Galilei 8 | 29027 loc. I Casoni | Gariga di Podenzano | PC | Italy
tel: +39 0523 523 152 | fax: +39 0523 523 152 | email: direzione@ciprind.com